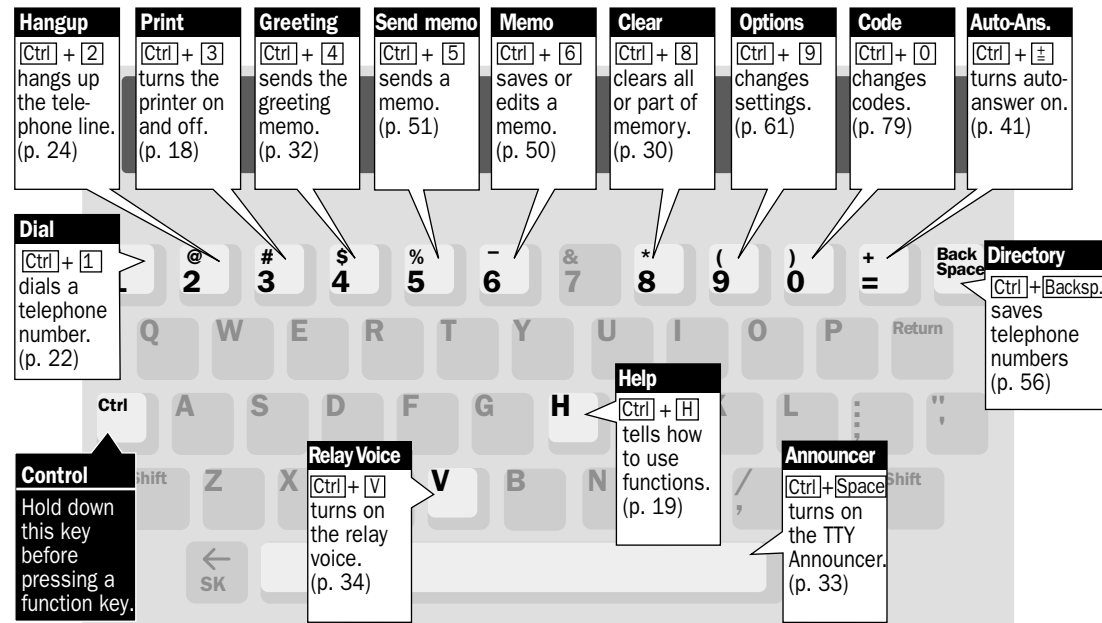


# SUPERPRINT 4425 FUNCTIONS

The keyboard picture shows the most important functions. Other functions are listed below. Page numbers refer to where to find more information in the user guide, *Using your Superprint 4425*.



<b>Save Conversation</b>	Ctrl + 7	Saves the most recent conversation as a memo.	p. 54
<b>Interrupt</b>	Ctrl + I	Interrupts the other person when he or she is typing.	p. 27
<b>Time</b>	Ctrl + T	Displays and prints the date and time.	p. 12
<b>Auto busy redial</b>	Ctrl + Shift + Return	Repeatedly dials a busy number once each minute up to 15 times.	p. 36
<b>Wait for response</b>	Ctrl + Shift + W	When on hold, flashes the Ring Flasher when the other person starts typing.	p. 34
<b>Three-way calling</b>	Ctrl + Shift + F	Allows you to use 3-way calling telephone service.	p. 37
<b>Change to Baudot</b>	Ctrl + Shift + B	Changes from Turbo Code to Baudot code.	p. 27
<b>Remain</b>	Ctrl + R	Shows how much empty space is left in memo and directory memory.	p. 51
<b>Sensitivity</b>	Ctrl + S	Improves reception in Baudot code only.	p. 75
<b>Change to other TTY</b>	Ctrl + Shift + C	Puts call on hold so you can change TTYs.	p. 36

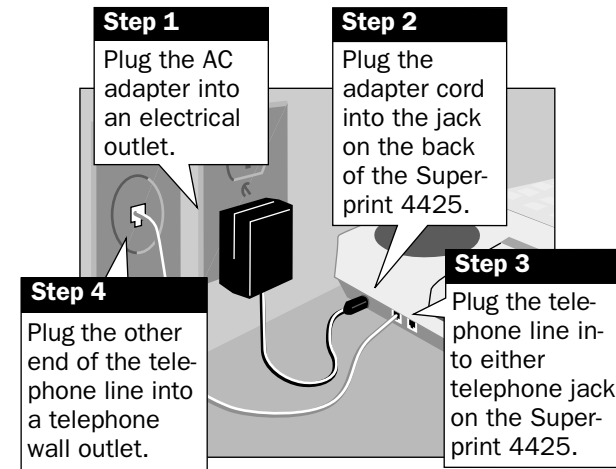
# SUPERPRINT 4425™ QUICK GUIDE

This guide contains basic instructions. For complete information, see the user guide, *Using your Superprint 4425*. These instructions describe direct connect use of the Superprint 4425. See the user guide for information on using a telephone handset in the black cups.

## SET-UP

You need to plug in the power and telephone lines, set the clock, and program the relay voice to set up the Superprint 4425.

You must plug in the AC adapter for 24 hours before using the batteries. Be sure to remove the plastic tab from the battery compartment before plugging in the AC adapter.



**Caution!** Be sure to plug the Superprint 4425 into a standard household telephone line. Using any other type of line may damage your telephone system or the Superprint 4425. You will also void your warranty. For more information, see the user guide, *Using your Superprint 4425*.

## SETTING THE CLOCK

- Press **Ctrl + 9**.  
PRINT (UP/LOW) CASE
- Press **Return** until you see:  
CHANGE CLOCK (NO)
- Press **Spacebar**.  
CHANGE CLOCK (YES)
- Press **Return**.  
01/01/97 12:00 AM
- Press **Spacebar** or **Backspace**.  
04/01/97 12:00 AM
- Press **Return**.  
04/01/97 12:00 AM
- Repeat 5. and 6. for all settings.  
04/01/97 12:00 AM
- Press **Esc** twice.  
SUPERPRINT 4425

(Set-up continued)

### SAVING A RELAY NUMBER

1. Press **Ctrl**+**9**.  
PRINT (UP/LOW) CASE
2. Press **Return** until you see:  
EDIT RELAY NUM (NO)
3. Press **Spacebar**.  
EDIT RELAY NUM (YES)
4. Press **Return**.  
RELAY>
5. Type the number.  
RELAY>8002222222
6. Press **Return**.  
RELAY NUMBER SAVED
7. Press **Esc**.  
SUPERPRINT 4425

**Ultratec, Inc.**  
450 Science Dr.  
Madison, WI 53711  
(608) 238-5400 (Voice/TTY)

## CALLING

### MAKING A CALL

1. Turn on the Superprint 4425.  
SUPERPRINT 4425
2. Press **Ctrl**+**1**.  
TYPE NAME,NUM, OR CR
3. Type a number.  
238-5400
4. Press **Return**.  
DIALING 238-5400
5. Wait for an answer.  
JOHN HERE GA
6. Type your message.  
HI THIS IS MARTHA GA
7. Turn off the Superprint 4425 to end the call.

### ANSWERING A CALL

1. Turn on the Superprint 4425.  
... RING ...
2. Type a greeting.  
MARTHA HERE GA
3. Wait for an answer.  
HELLO THIS IS JOHN
4. Turn off the Superprint 4425 to end the call.

## AUTO-ANSWER

### TURN ON

1. Press **Ctrl**+**+**.  
ANSWER MEMO>\_ANSWER
  2. Press **Return**.  
AUTO ANS ON 0 MSG
- Press **Esc** to turn off auto-answer at any time.

### READING MESSAGES

- Auto-answer display shows the number of messages:
- AUTO ANS ON 2 MSG
1. Press **Esc**.  
REVIEW MESSAGES Y/N
  2. Press **Y**.  
----- 1/08/97 03:18

## MEMOS

### SAVING A MEMO

1. Press **Ctrl**+**6**.  
EDIT MEMO>\_\_\_\_\_
2. Type a name.  
EDIT MEMO>\_\_HELLO
3. Press **Return**.  
HELLO>\_\_\_\_\_
4. Type the memo.  
HELLO>HI JOHN HERE GA
5. Press **Esc** when you finish.  
MEMO SAVED

### SENDING A MEMO

1. Press **Ctrl**+**5**.  
SEND MEMO>\_\_\_\_\_
2. Press **Spacebar**.  
HELLO>HI JOHN HERE GA
3. Press **Return**.  
JOHN HERE GA

## DIRECTORY

### SAVING A NUMBER

1. Press **Ctrl**+**Backspace**.  
DIR NAME>\_\_\_\_\_
2. Type a name.  
DIR NAME>\_\_\_\_\_TOM
3. Press **Return**.  
TOM >
4. Type the number.  
TOM >222 5555
5. Press **Esc** when you finish.  
ENTRY SAVED

### DIRECTORY DIALING

1. Press **Ctrl**+**1**.  
TYPE NAME,NUM, OR CR
2. Type a name.  
DIR NAME>\_\_\_\_\_TOM
3. Press **Return**.  
DIALING 222-5555

### REDIALING A NUMBER

1. Press **Ctrl**+**1**.  
TYPE NAME,NUM, OR CR
2. Press **Return**.  
REDIALING 222-5555